

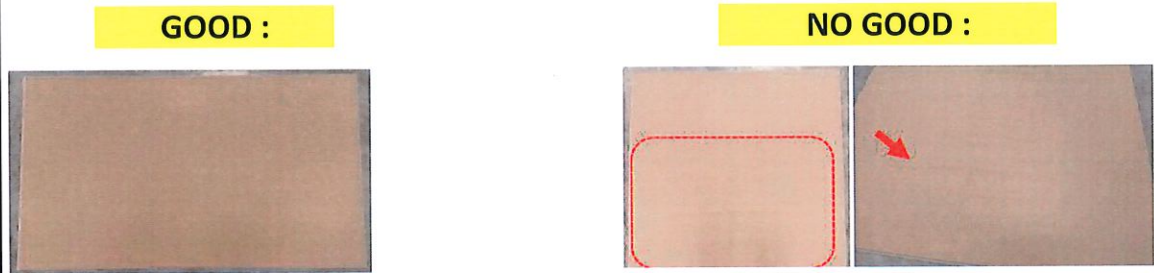


Investigation Report of Lamination Glue Stain on LOUVRE 2 ICB 5165913-00

CONTROL No:	IRF-25-01-0098		REJECT PERCENTAGE:	4.00%
REJECT QTY:	64	LOT QTY:		

DIRECT CAUSE	W1	Glue stain occur on lamination mass production
	W2	Glue contamination occur on water catch pan
	W3	Main supply of water has been turn off
	W4	There is a leak on the main valve of the water supply
	W5	The gate valve of the water supply is damage.

ILLUSTRATION:



PRODUCTION ACTION PLAN

IMMEDIATE ACTION	Wash up the roller using the running water. Also conduct cleaning of the glue palate of the lamination machine	PIC:	Prod Leader	TARGET DATE:	260113
CORRECTIVE ACTION	Repair and change the gate valve of the water supply in lamination.	PIC:	Engineering	TARGET DATE:	260120

PREPARED BY:

Glenn Magsing
Glenn Magsing
PROD SUPERVISOR

APPROVED BY:

Weena V. Apalla
WEENA V. APALLA
ASST. MANAGER