

Production Department (Lima)

Investigation Report for Peel-off on Louvre 2 MDX ETD 516691300

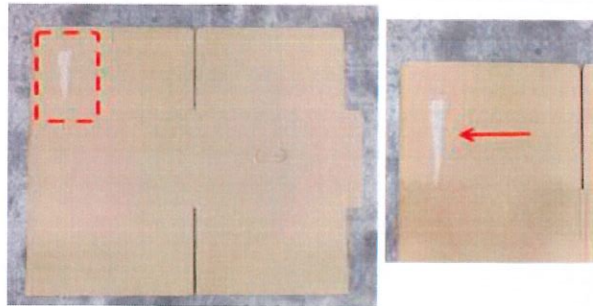
CONTROL No:	IRF - 0091		REJECT PERCENTAGE:	3.83%
REJECT QTY:	46	LOT QTY:		

DIRECT CAUSE	W1	Peel-off due to cell belt bottom feeder area.
	W2	When an item passes across the cell belt area, it scratches the belt, causing it to peel off.
	W3	Item that passes across the cell belt area was a soft board condition.
	W4	The item's soft board condition was due to a misting process applied to it because of its hardness factor, which burst during the diecut process.
	W5	n/a

ILLUSTRATION:

**GOOD :**

**REJECT :**



PRODUCTION ACTION PLAN

IMMEDIATE ACTION	Inform operator to check the curing time of item required before processing it.	PIC:	Prod Leader	TARGET DATE:	July 30, 2025
IMMEDIATE ACTION	Reorientation to operator about the posted 15 minutes curing before processing of item and to follow the " first misting first to process"	PIC:	Prod IE	TARGET DATE:	Aug. 05, 2025

PREPARED BY:

*Noemi Cepeda*  
NOEMI CEPEDA  
PROD SUPERVISOR

APPROVED BY:

*Weena V. Apalla*  
WEENA V. APALLA  
ASST. MANAGER